

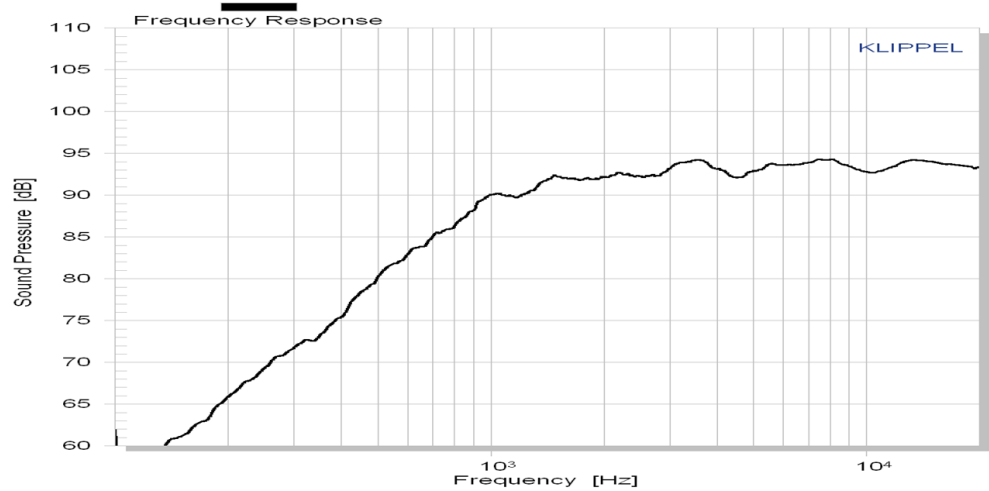
C30-6-024

Tweeter

DOMEMATERIAL: CERAMIC
APPLICATION: TWEETER
NOMINAL DIAMETER: 30 mm
SENSITIVITY: 93 dB

MAIN FEATURES :

- SPECIAL DOME CUTOUTS
- OVERHUNG MOTOR DESIGN
- SOFT FABRIC SURROUND
- VENTED VC & POLE PIECE
- FERROFLUID FILLING
- 1800 HZ - 28 KHZ



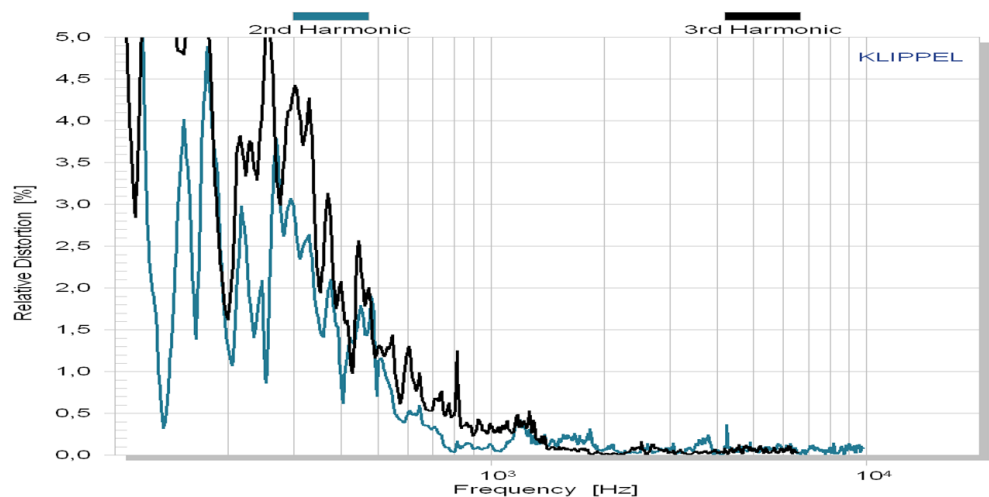
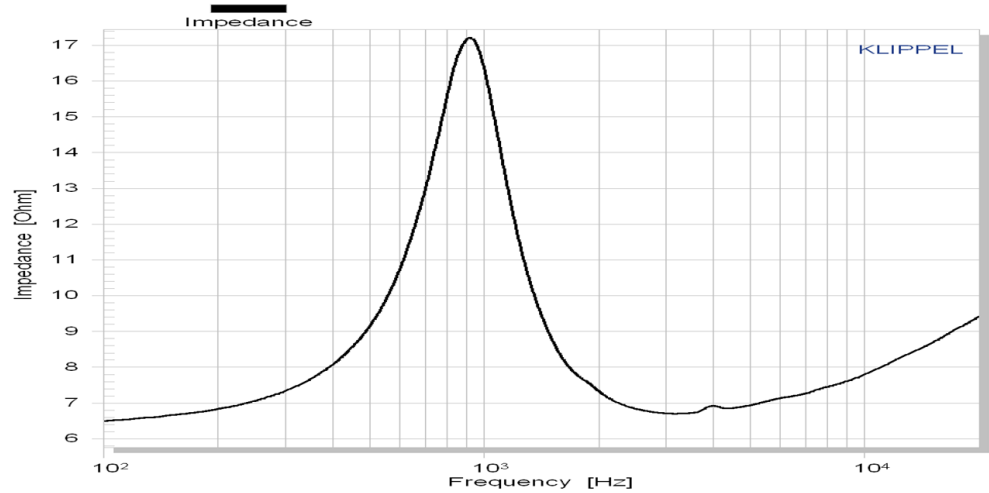
The **C30 - 6 - 024** is a 1.2 inch tweeter with ultra hard **ceramic dome** in a 82 mm frontplate.

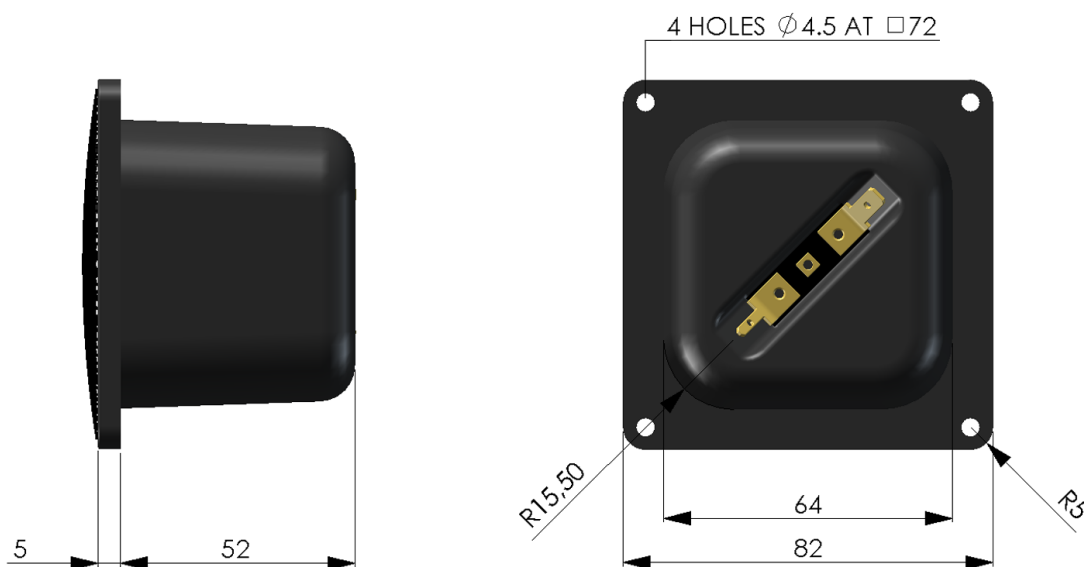
Anti-resonant **cutout fills** in the ceramic dome provide for damping of the dome resonance.

An overhung motor design with vented aluminium voice coil former and neodymium magnet guarantees low energy storage and excellent heat transfer.

The **soft fabric surround** and ferrofluid with high viscosity center the moving parts with distinctive linearity.

We recommend an application above 1800 Hz.





Mechanical data		
Overall square	82	mm
Cutout hole square	64	mm
Frontplate depth	5	mm
Overall depth	57	mm
Motor assembly diameter	-	
Motor assembly depth	-	
Screw fitting	DIN 7984, 4mm	
Terminal	+ : 4.8 x 0.8 / - : 2.8 x 0.8	mm
Shipping weight / net weight (one piece)	0.54 / 0.44	mm
Shipping box size (pair)	130 / 130 / 190	mm

Thiele/Small Parameters			
Sensitivity (2.83V / 1m)	Lp	93*	dB
DC-resistance	Re	6.0	Ohm
resonance frequency	Fs	930	Hz
equivalent volume of air	Vas	-	L
mechanical Q	Qms	1.96	
electrical Q	Qes	1.06	
total Q	Qts	0.69	
effective piston area	Sd	8.55	cm ²
moving mass	Mms	0.4	g
suspension compl.	Cms	0.073	mm/N
mechanical resistance	Rms	1.2	kg x s

Voice Coil data			
Power handling	P	120*	Watt
Linear excursion	Xmax	+/- 0.5	mm
Voice coil diameter		19.4	mm
Voice coil former material		Al	
Voice coil wire material		Cu	
Voice coil inductance	Le	0.03	mH
Force factor	Bl	3.64	N/A
Motor type		Overhung	
Ferrofluid filling		yes	

* Please refer to www.accuton.com for exact measurement conditions and further information.